



Supplement of

Biogeochemical layering and transformation of particulate organic carbon in the Tropical Northwestern Pacific Ocean inferred from $\delta^{13}\text{C}$

Detong Tian et al.

Correspondence to: Xuegang Li (lixuegang@qdio.ac.cn) and Jinming Song (jmsong@qdio.ac.cn)

The copyright of individual parts of the supplement might differ from the article licence.

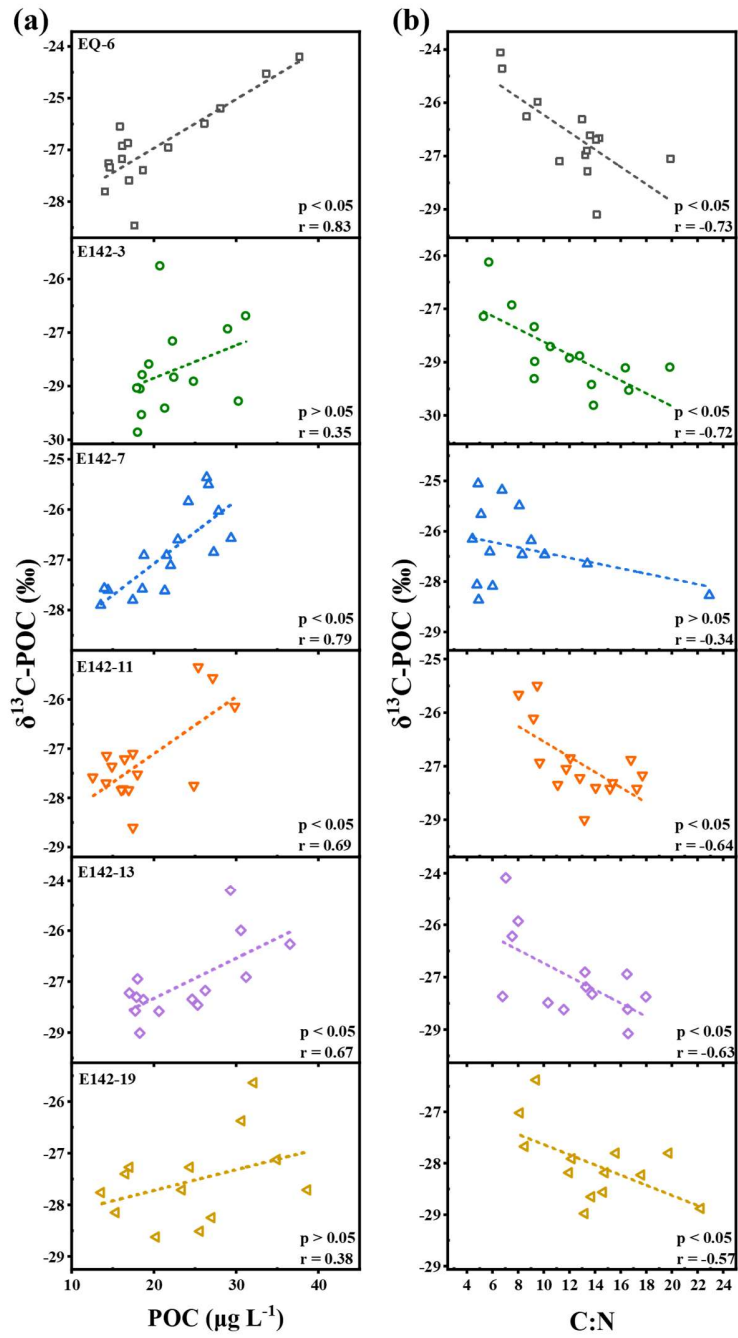


Figure S1. Relationships between $\delta^{13}\text{C-POC}$ and (a) POC concentration and (b) C:N ratio across sampling stations.