



Supplement of

Tipping of the double-diffusive regime in the southern Adriatic Pit in 2017 in connection with record high-salinity values

Felipe L. L. Amorim et al.

Correspondence to: Vanessa Cardin (vcardin@ogs.it)

The copyright of individual parts of the supplement might differ from the article licence.

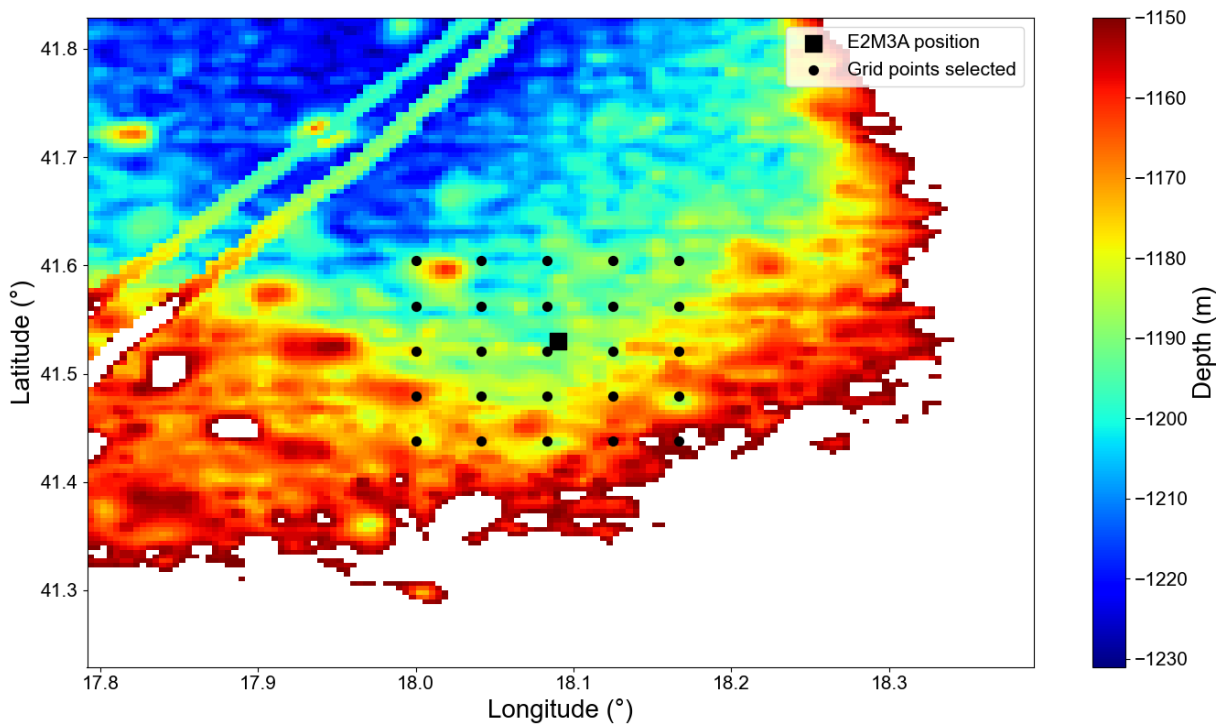
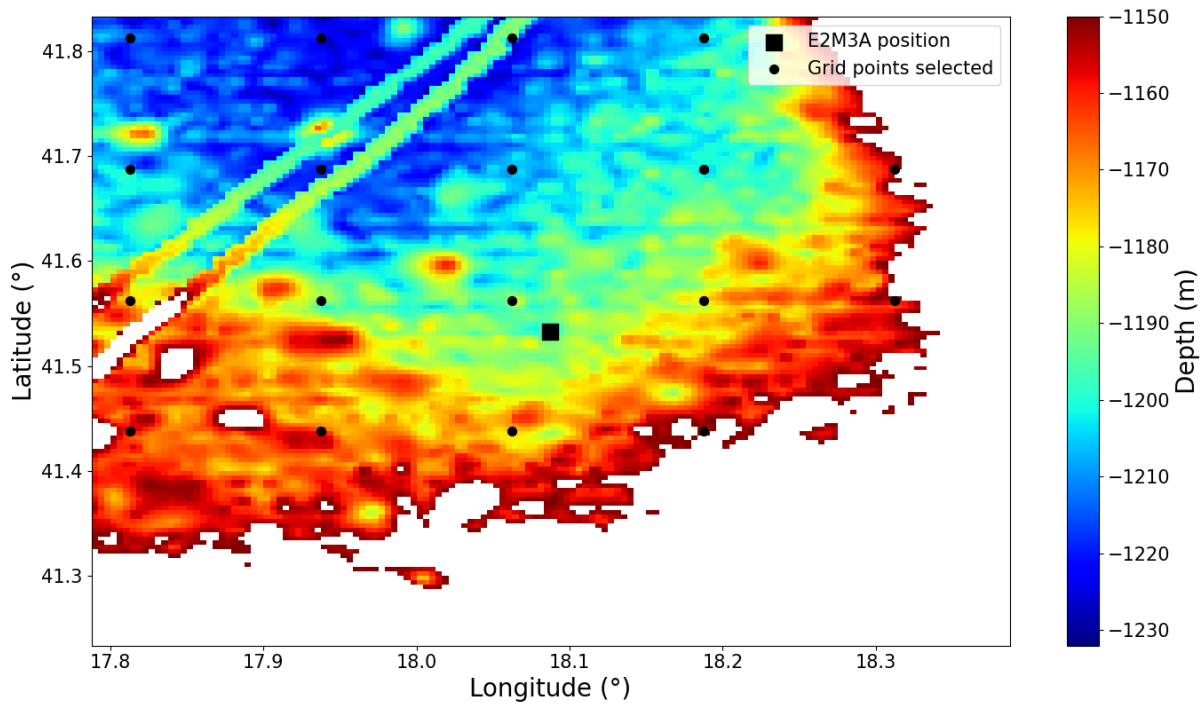


Fig. S1: Selected grid points near the E2M3A position used to calculate the maximum depth of the mixed layer for the entire study period.



5 Fig. S2 Selected grid points near the E2M3A position used to calculate the average relative vorticity for the entire study period.

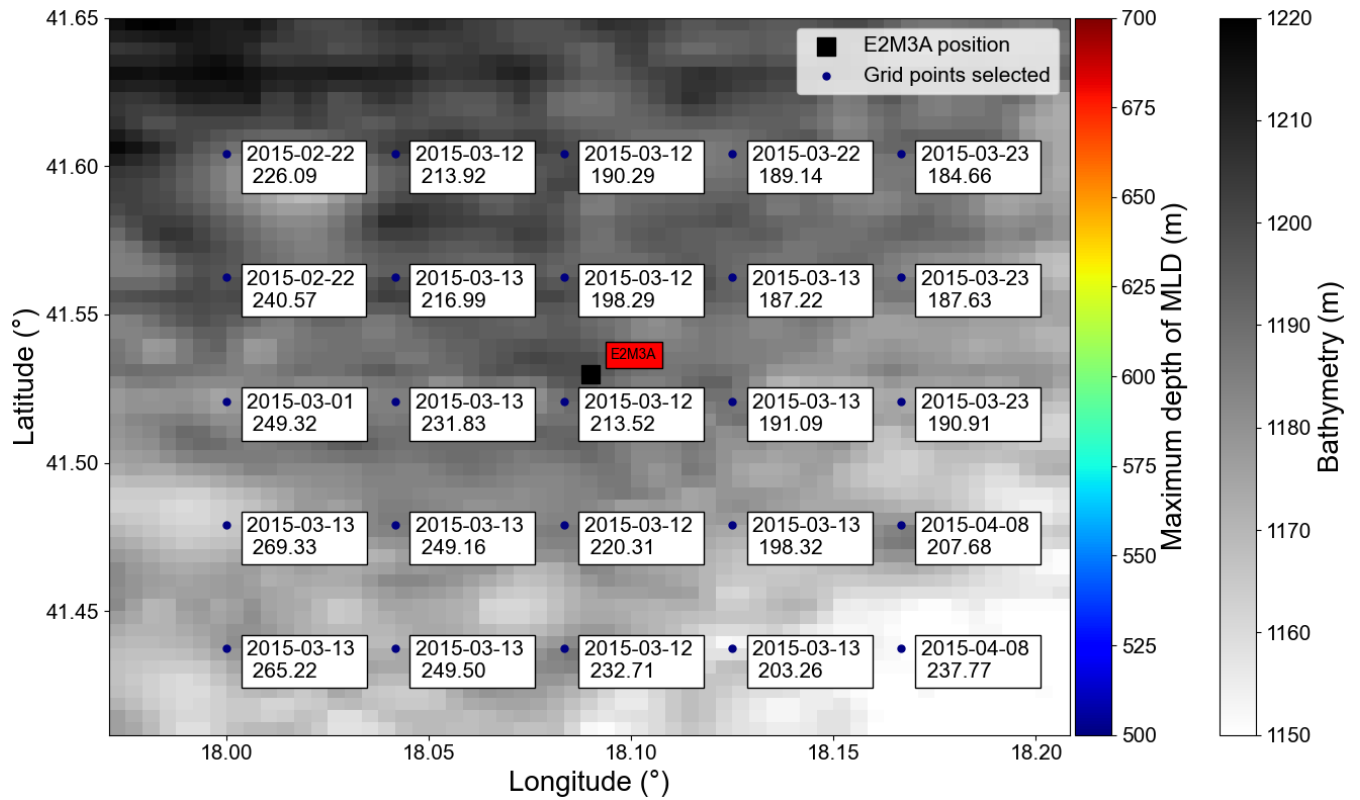
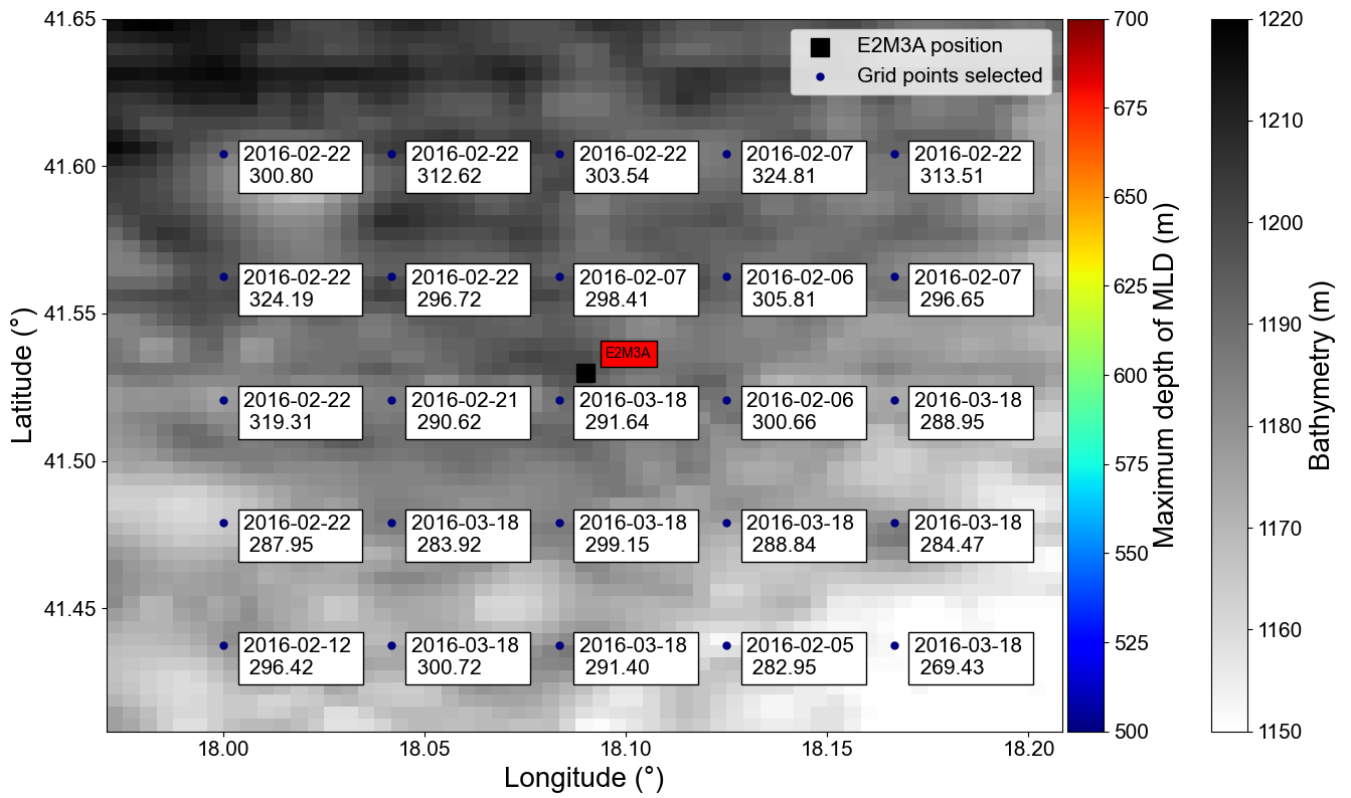


Fig. S3: Selected grid points near E2M3A location used to determine the maximum depth of the mixed layer in winter 2015, as indicated in table 1.



10

Fig. S4: Selected grid points near E2M3A location used to determine the maximum depth of the mixed layer in winter 2016, as indicated in table 1.

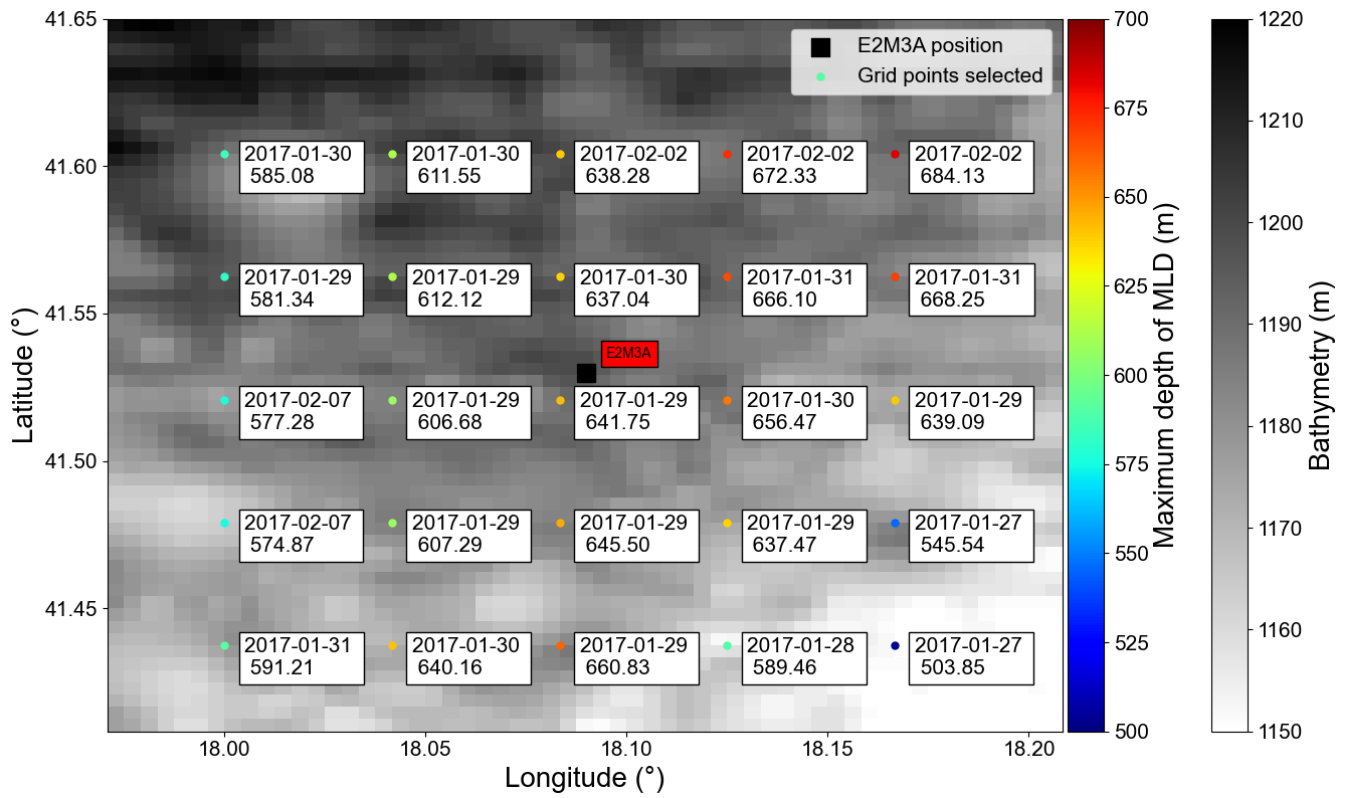


Fig. S5: Selected grid points near E2M3A location used to determine the maximum depth of the mixed layer in winter 2017, as indicated in table 1.

15

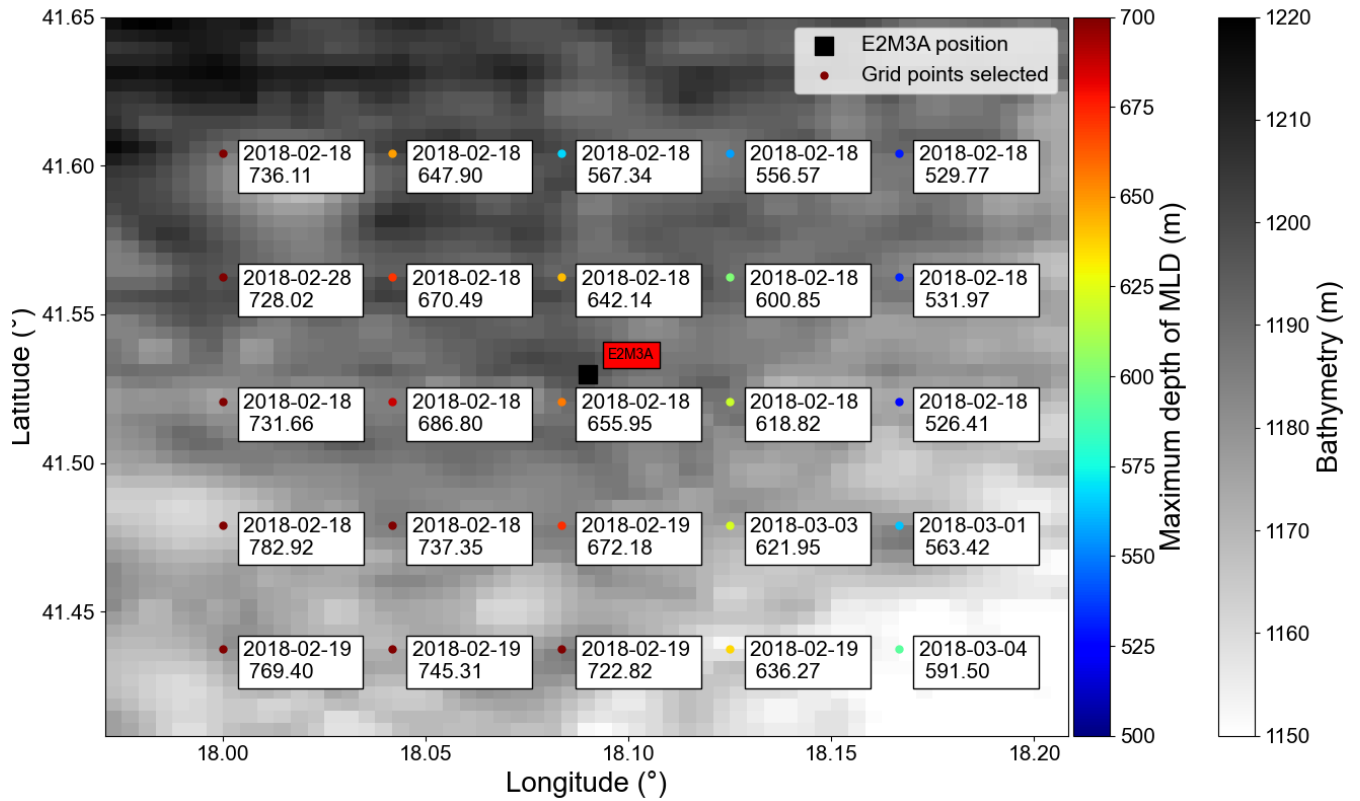
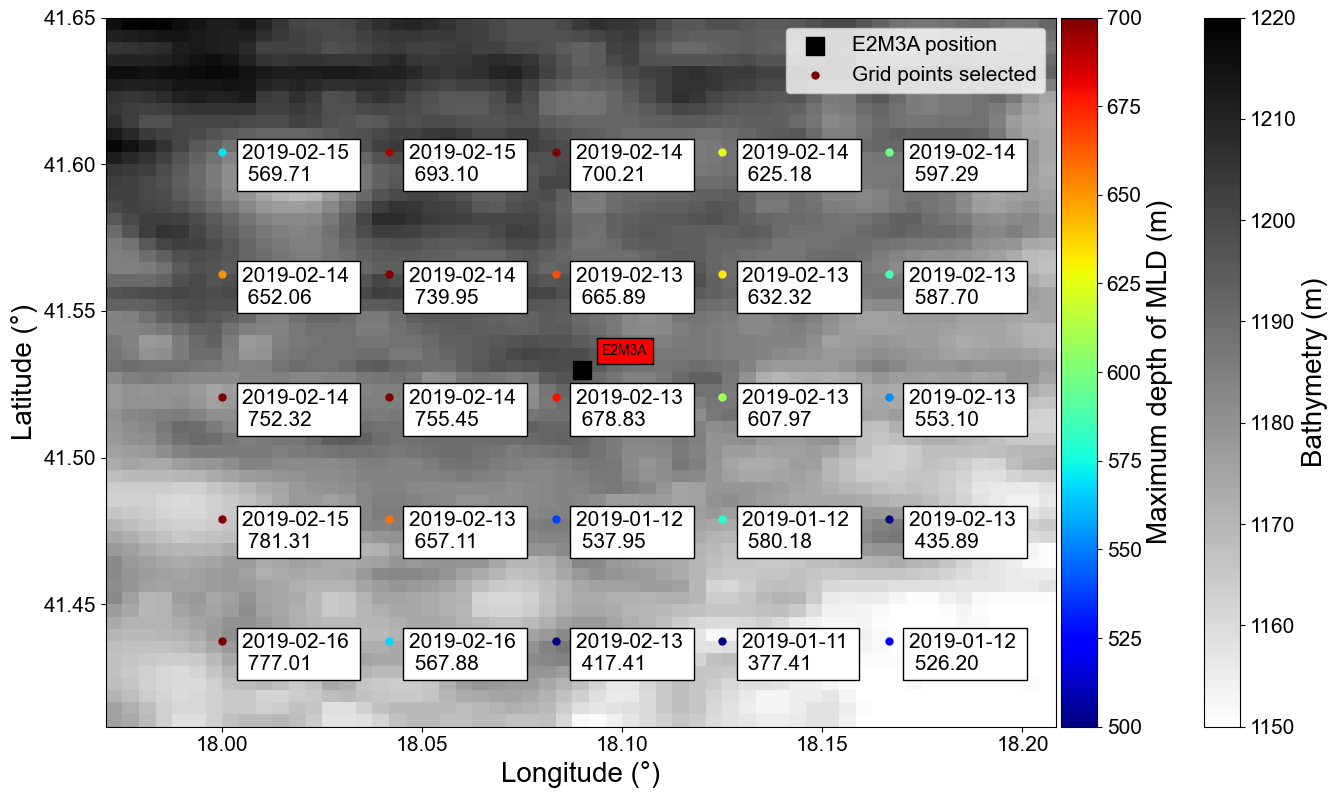


Fig. S6: Selected grid points near E2M3A location used to determine the maximum depth of the mixed layer in winter 2018, as indicated in table 1.



20

Fig. S7: Selected grid points near E2M3A location used to determine the maximum depth of the mixed layer in winter 2019, as indicated in table 1.

25