



*Supplement of*

## **The effects of Hurricane Harvey on Texas coastal-zone chemistry**

**Piers Chapman et al.**

*Correspondence to:* Piers Chapman ([piers.chapman@tamu.edu](mailto:piers.chapman@tamu.edu))

The copyright of individual parts of the supplement might differ from the article licence.

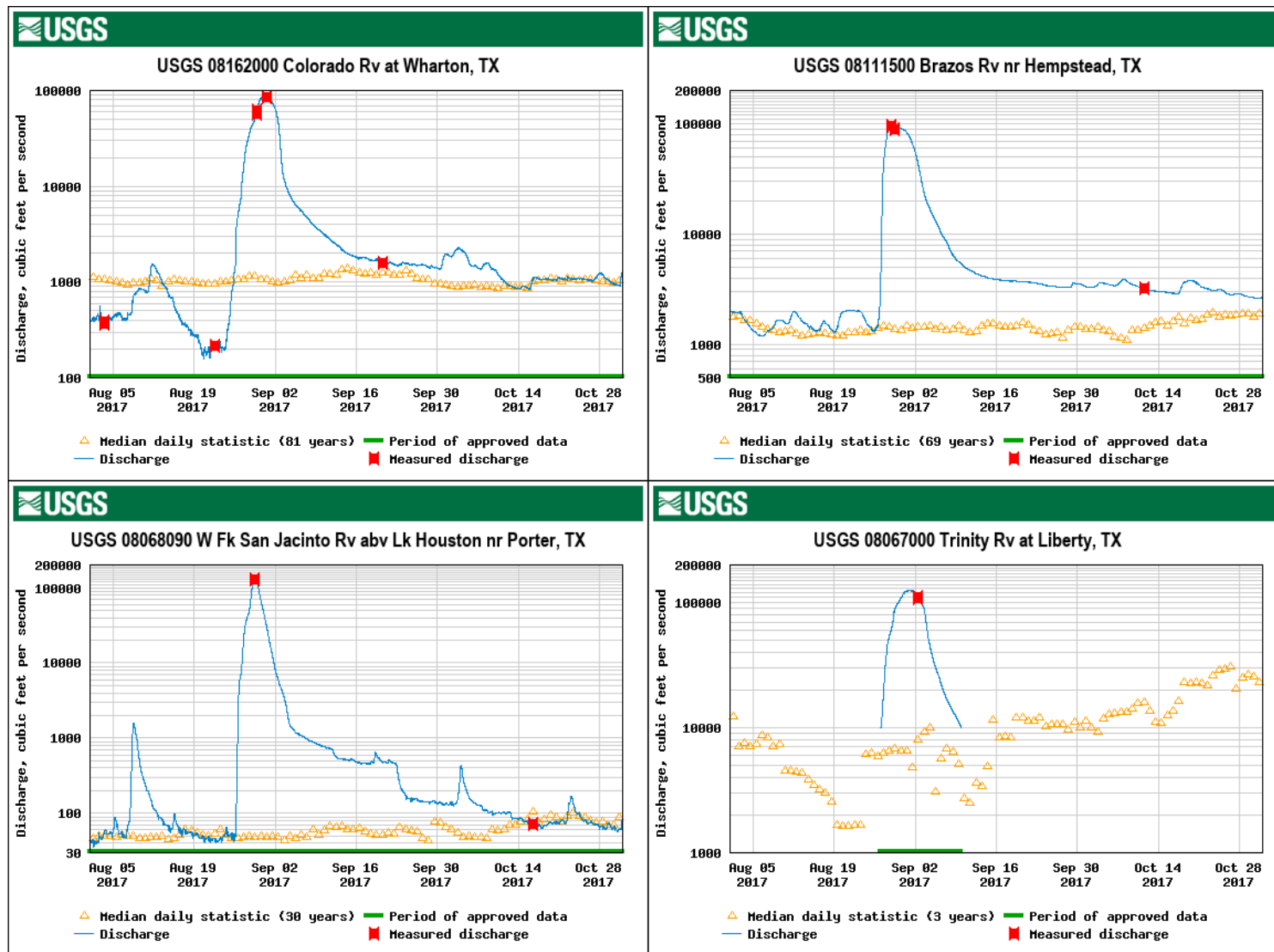


Fig. S1 Mean daily river flows for the (a) Colorado, (b) Brazos, (c) San Jacinto and (d) Trinity rivers in Texas for the period 1 August-31 October 2017. Graphs were downloaded from the USGS website at [www.usgs.gov](http://www.usgs.gov).



Fig. S2. MODIS true color image showing sediment plumes off Galveston Bay, and the Brazos, Colorado and Lavaca rivers (downloaded from <https://visibleearth.nasa.gov/view.php?id=90866>). The yellow triangle shows the position of TABS buoy F.

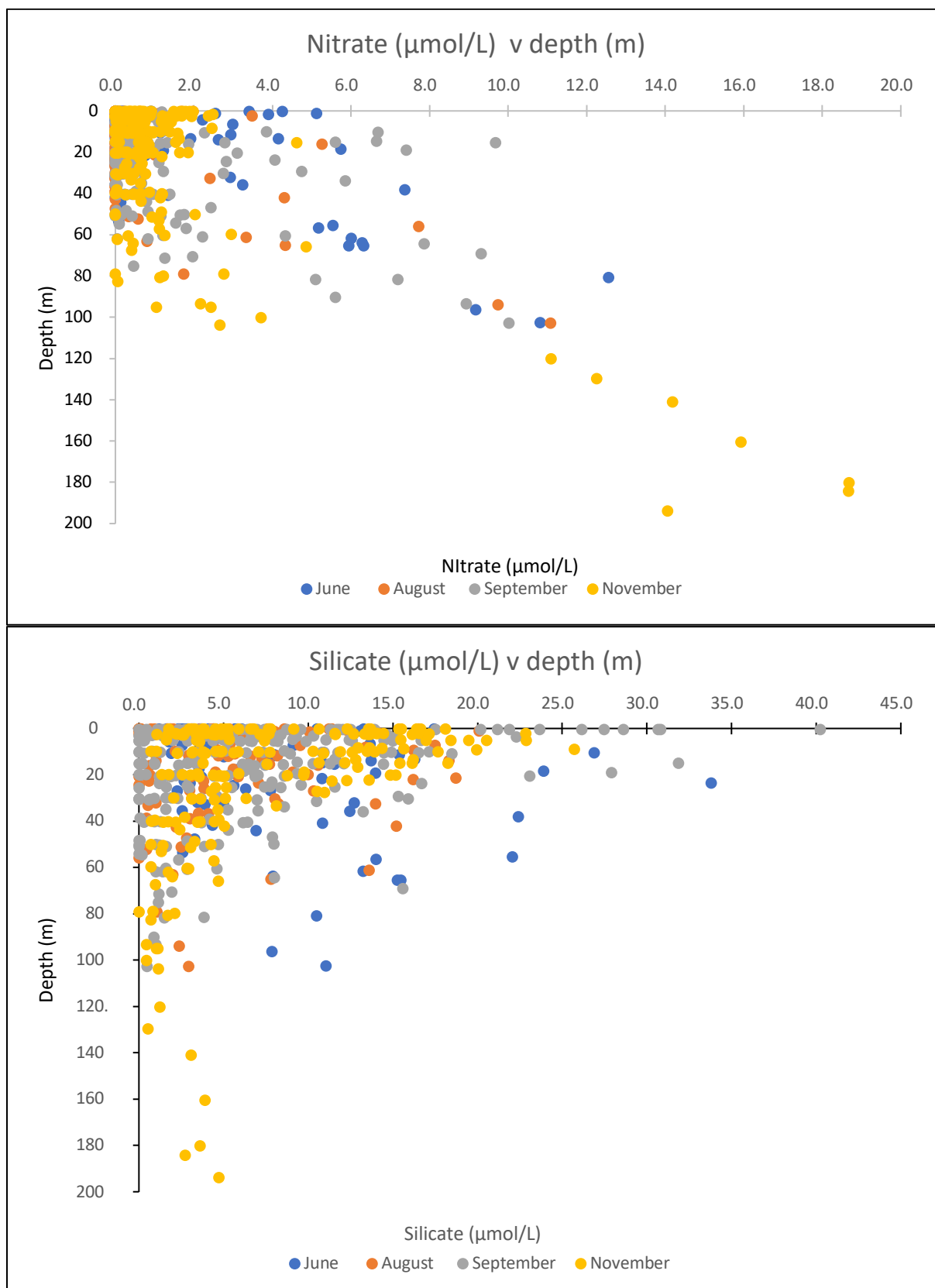
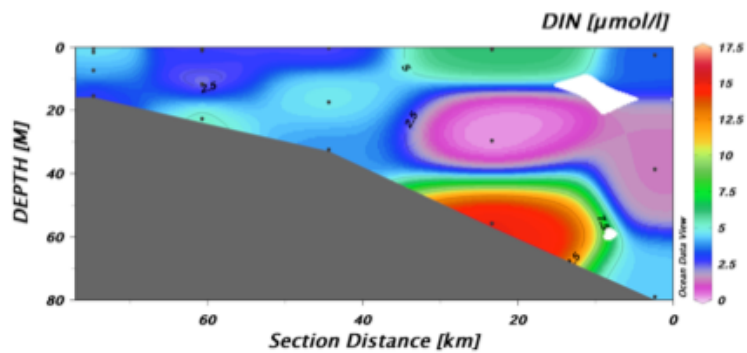
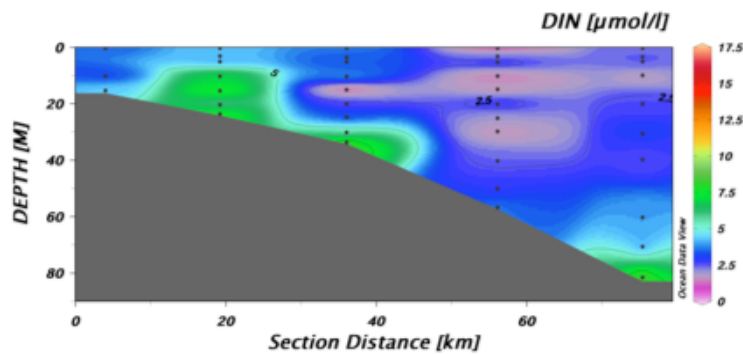


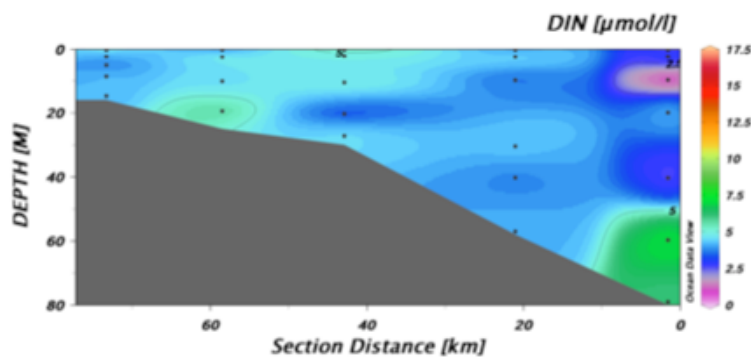
Fig. S3. Nitrate and silicate v depth for samples from the four cruises.



August 2017



September 2017



November 2017

Fig. S4. DIN (nitrate plus nitrite plus ammonia) concentrations ( $\mu\text{mol/L}$ ) along line 3 (stations 11-15) during August, September and November cruises

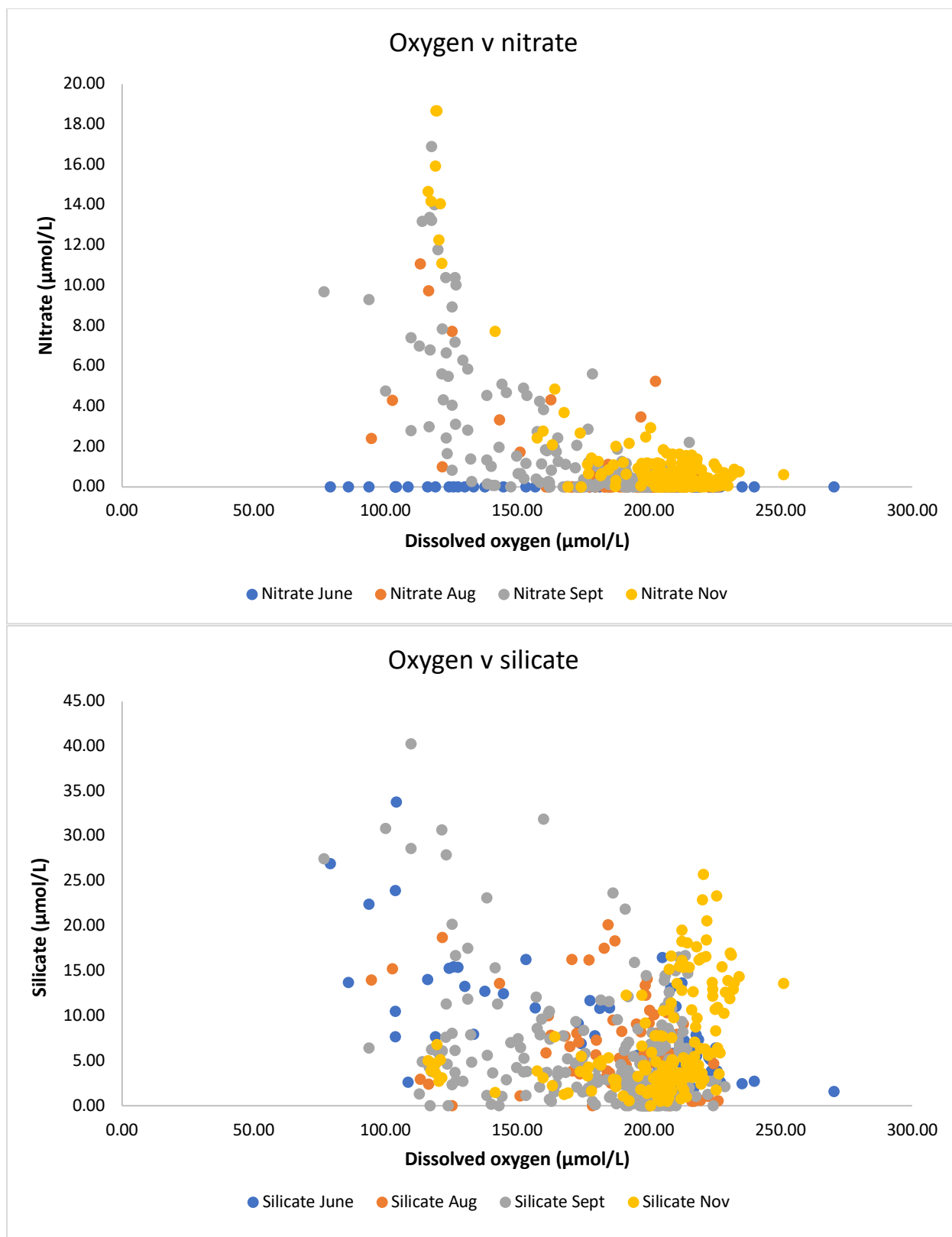


Fig S5. Nitrate and silicate versus dissolved oxygen for the four cruises