



Supplement of

Long-term eddy modulation affects the meridional asymmetry of the halocline in the Beaufort Gyre

Jinling Lu et al.

Correspondence to: Ling Du (duling@ouc.edu.cn)

The copyright of individual parts of the supplement might differ from the article licence.

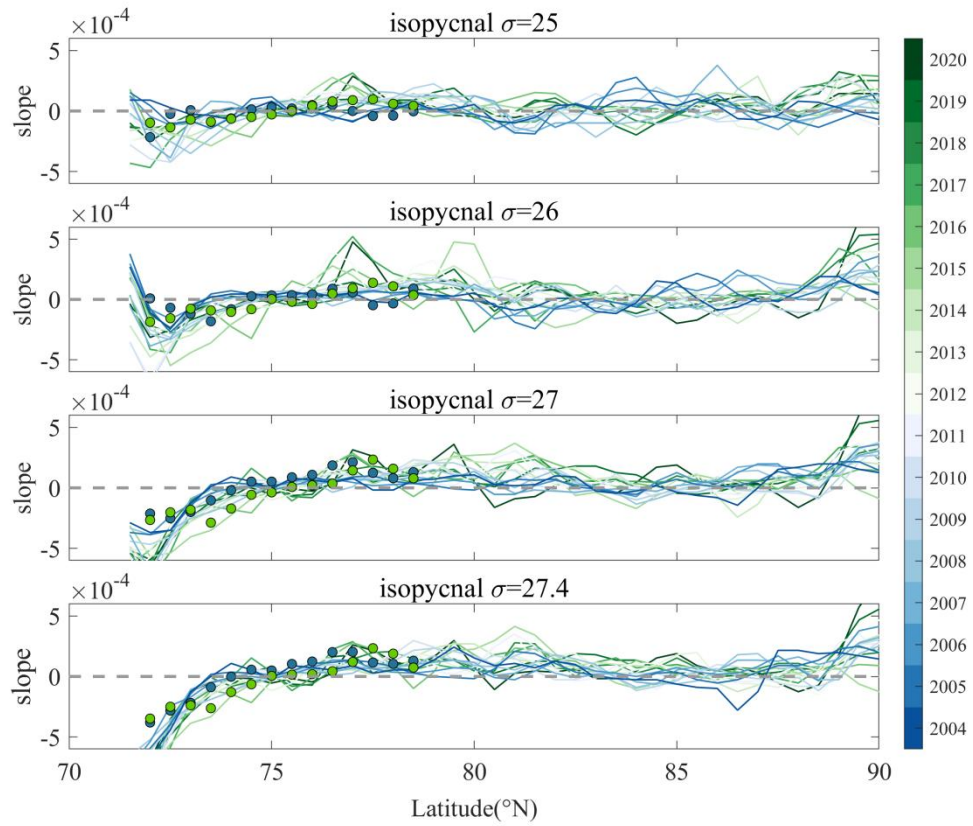


Figure S1. Annual meridional slope of isopycnals in the halocline layer from SODA (solid line). Blue (green) dots indicate the interannual mean meridional slope of isopycnals over the years 2004–2007 (2015–2021) from CTD.