



*Supplement of*

## **Bivariate sea-ice assimilation for global-ocean analysis–reanalysis**

**Andrea Cipollone et al.**

*Correspondence to:* Andrea Cipollone ([andrea.cipollone@cmcc.it](mailto:andrea.cipollone@cmcc.it))

The copyright of individual parts of the supplement might differ from the article licence.

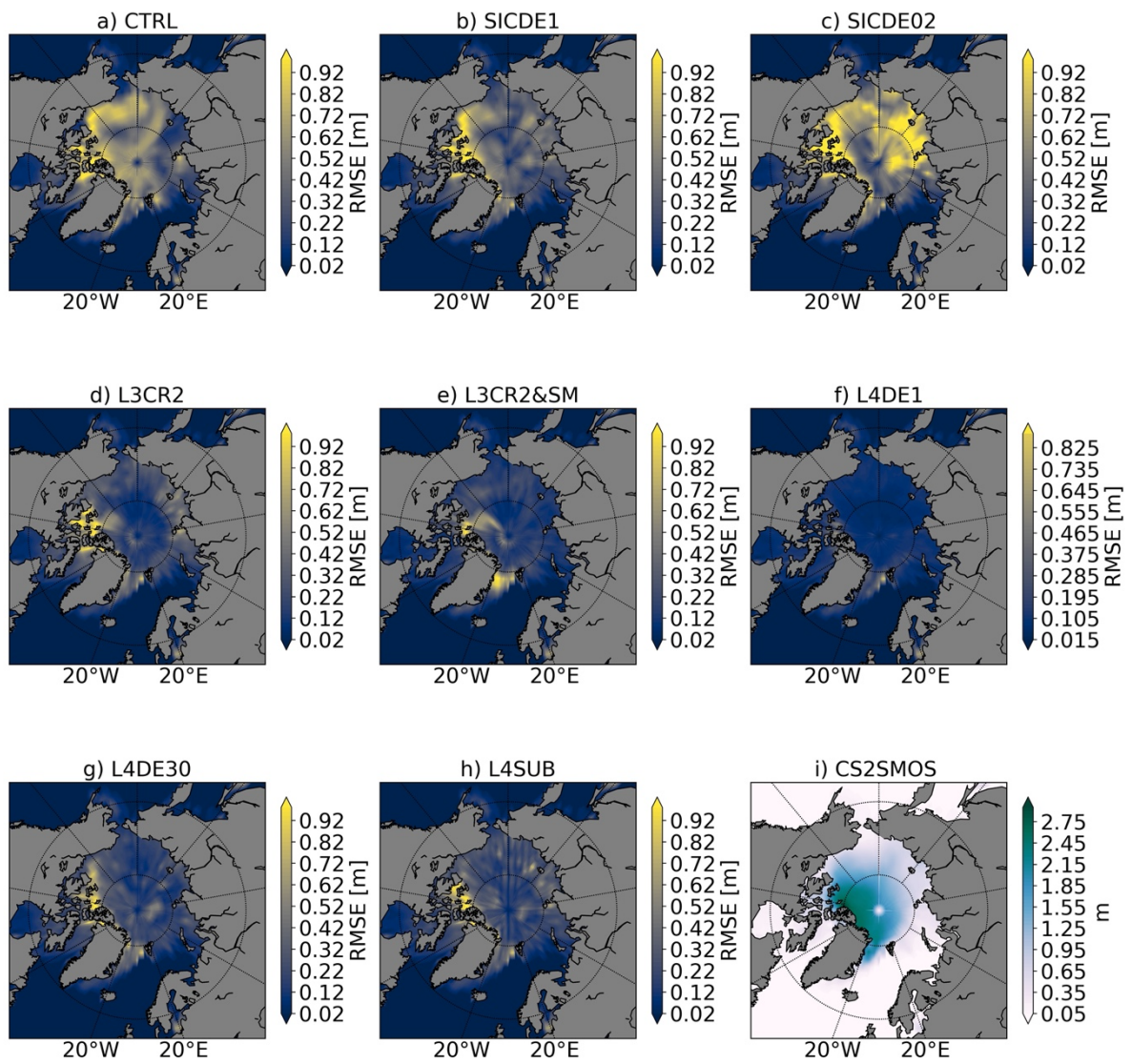


Figure S1. (a-h) Spatial SIT RMSE for different experiments against CS2SMOS data aggregating November statistics and binned in  $2^\circ \times 2^\circ$  boxes. Panel i) shows the November CS2SMOS SIT spatial mean.