



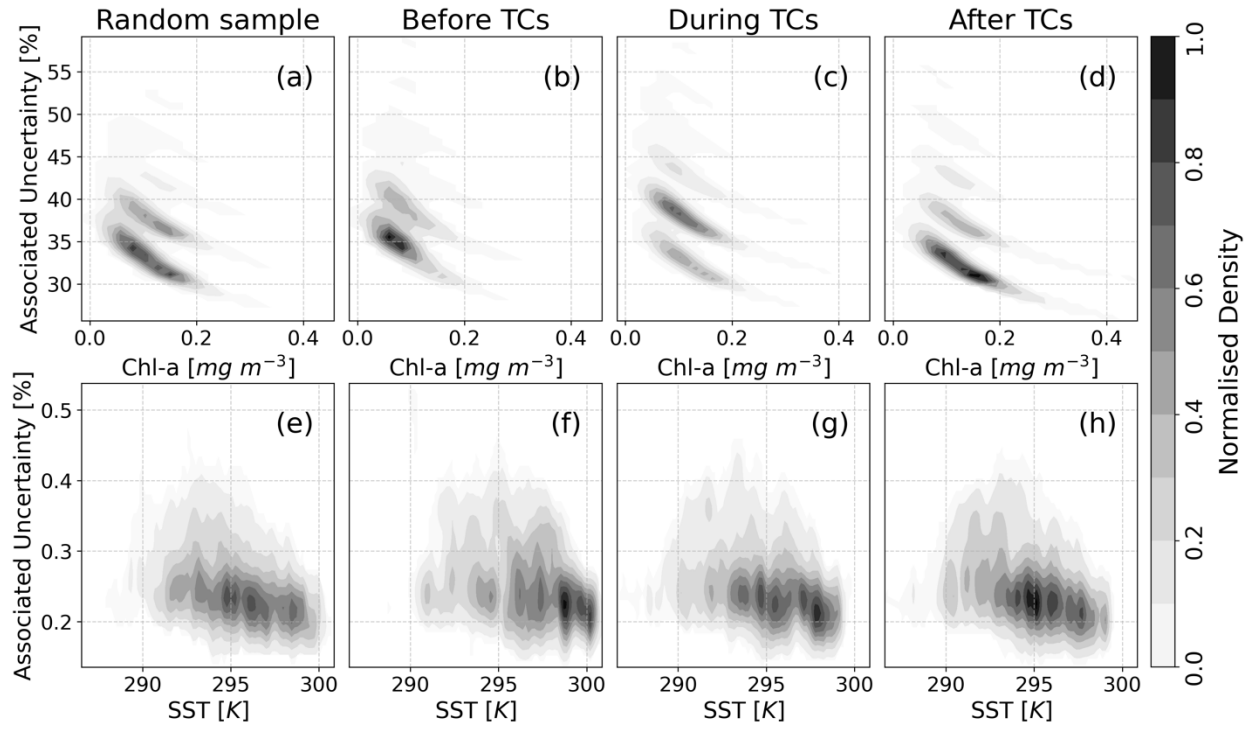
Supplement of

Upper-ocean response to the passage of tropical cyclones in the Azores region

Miguel M. Lima et al.

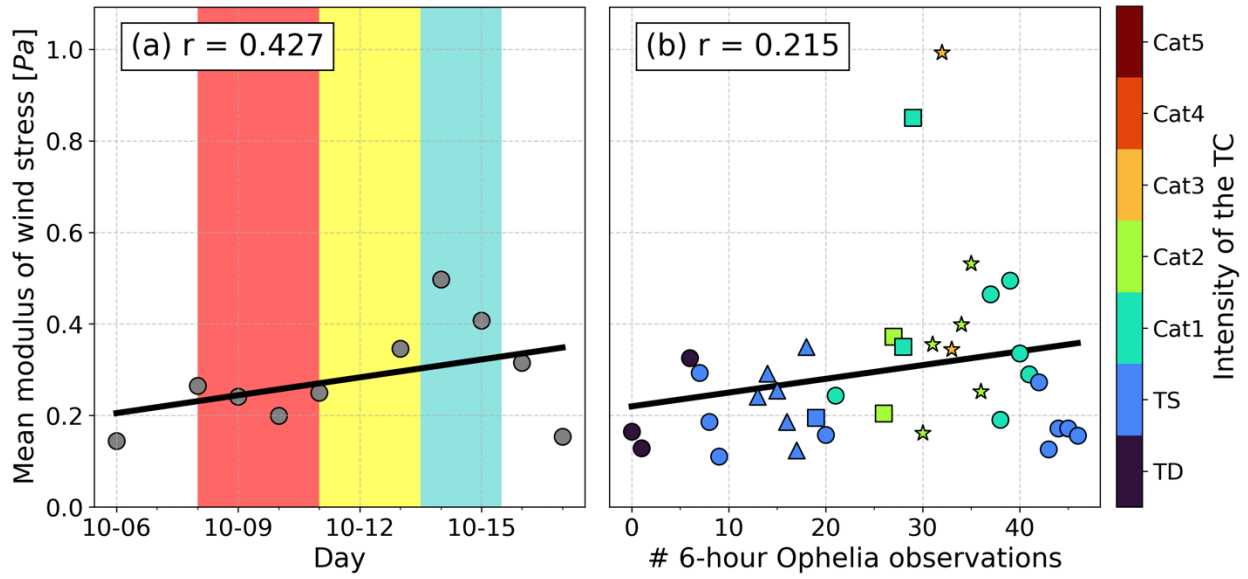
Correspondence to: Miguel M. Lima (malima@fc.ul.pt)

The copyright of individual parts of the supplement might differ from the article licence.



1

2 **Figure S1 – Uncertainty values associated to Chl-a (top row) and SST (bottom row) for three moments of analysis of all**
 3 **TCs (before, during, and after) and a random sample from the dataset. Do note the much larger scales of uncertainty for**
 4 **Chl-a; the SST is presented in Kelvin, as it is the unit from which the associated uncertainty is computed.**



5

6 **Figure S2 – Mean modulus of wind stress for (a) each day when Ophelia occurred, and (b) each 6-hour observation from**
 7 **Ophelia. Colours in (a) correspond to those in Figs. 6a and 6b while the markers in (b) correspond to those in Fig. 6a, round**
 8 **markers indicate observations outside the study region. Colours in (b) correspond to the intensity of that 6-hour**
 9 **observation.**