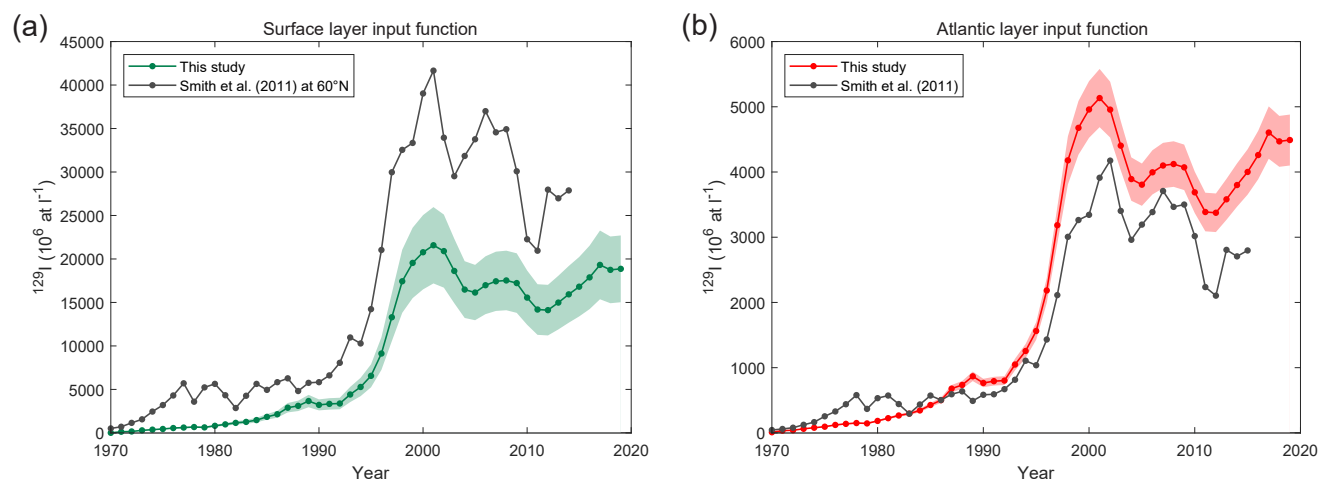
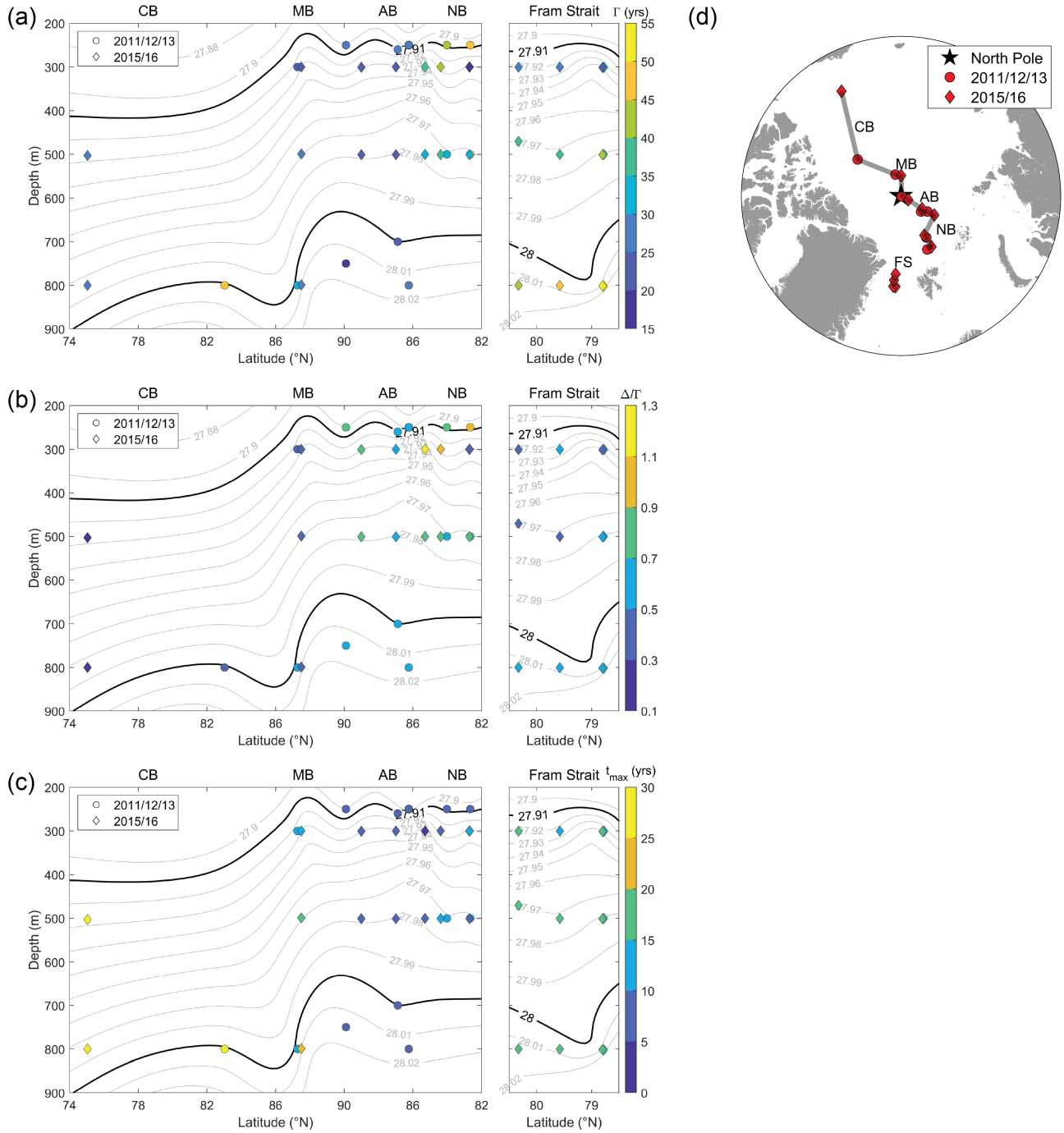


Supplement to Wefing et al.



**Figure S1.** Comparison of  $^{129}\text{I}$  input functions used in this study for the surface (a) and the Atlantic layer (b) to Smith et al. (2011).



**Figure S2.** Mean ages  $\Gamma$  (a),  $\Delta/\Gamma$  ratios (b) and mode ages  $t_{\max}$  (c) in a section across the North Pole, including samples from 250-800m from all expeditions. The section map is shown in (d). Contours are isopycnals, black contours correspond to core FSBW ( $\sigma_{\theta} = 27.91$ , about 200-300 m depth) and BSBW ( $\sigma_{\theta} = 28$ , about 700-800 m depth).