



Supplement of

Dynamical connections between large marine ecosystems of austral South America based on numerical simulations

Karen Guihou et al.

Correspondence to: Karen Guihou (karen.guihou@nlogin.es)

The copyright of individual parts of the supplement might differ from the CC BY 4.0 License.

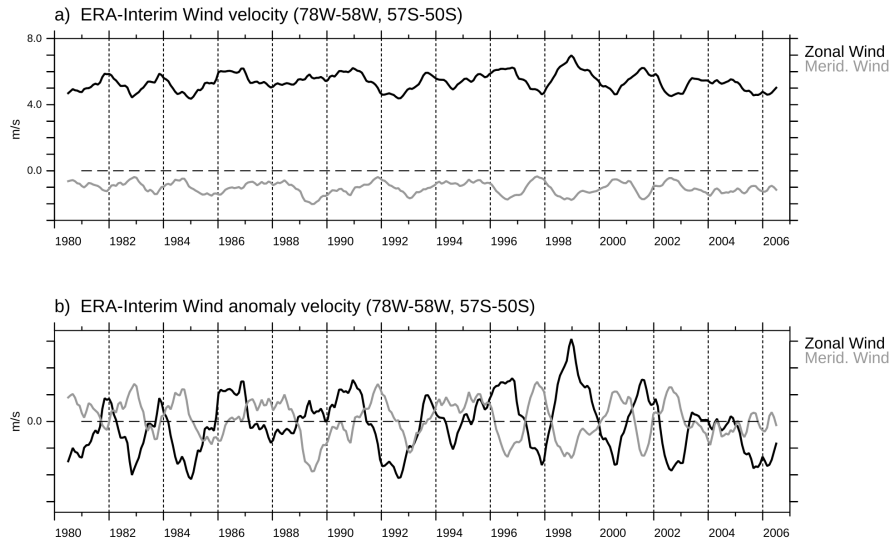


Figure S1 – Area averaged (78 – 58°W, 57 – 50°S) Era-Interim wind velocity. Wind velocity (panel a) and wind velocity anomalies (panel b). A 12-month running mean is applied to the data to filter the seasonal signal.

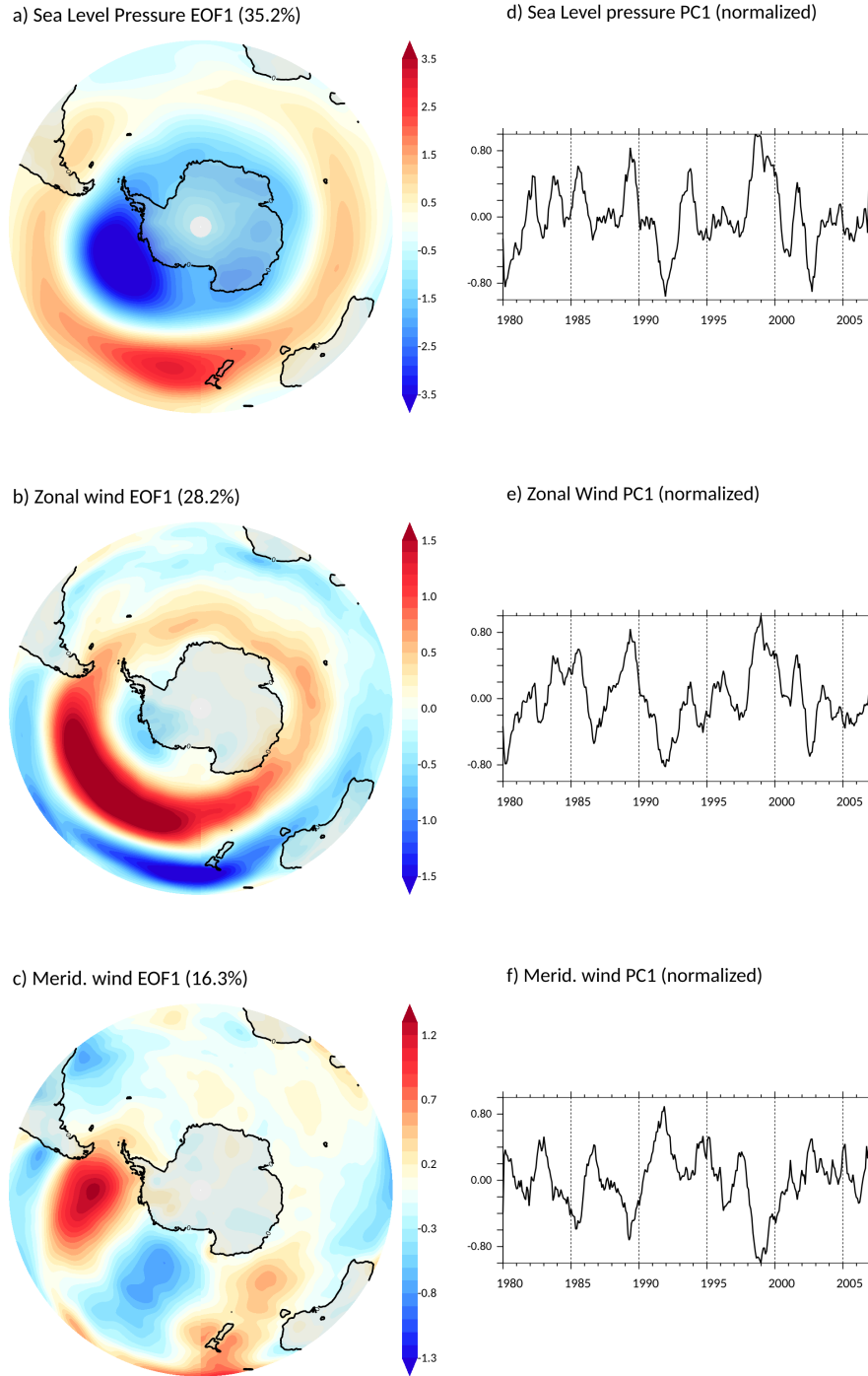


Figure S2 – First EOF mode of sea-level pressure (a), zonal (b) and meridional (c) wind anomalies and annual means of first EOF mode of sea-level pressure (d), zonal (e) and meridional (f) wind anomalies, south of 20° based on the ERA-Interim reanalysis data during the period 1980-2006. A 12-month running mean is applied to the data to filter the seasonal signal.