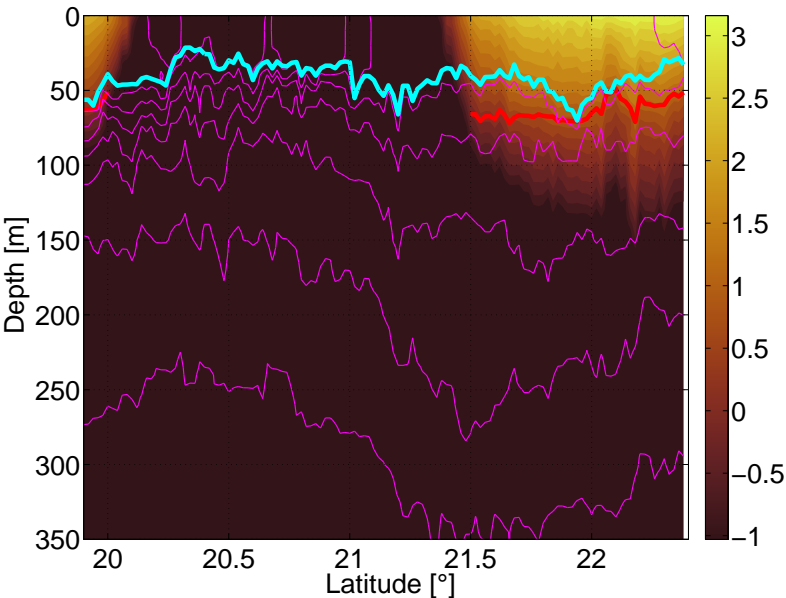
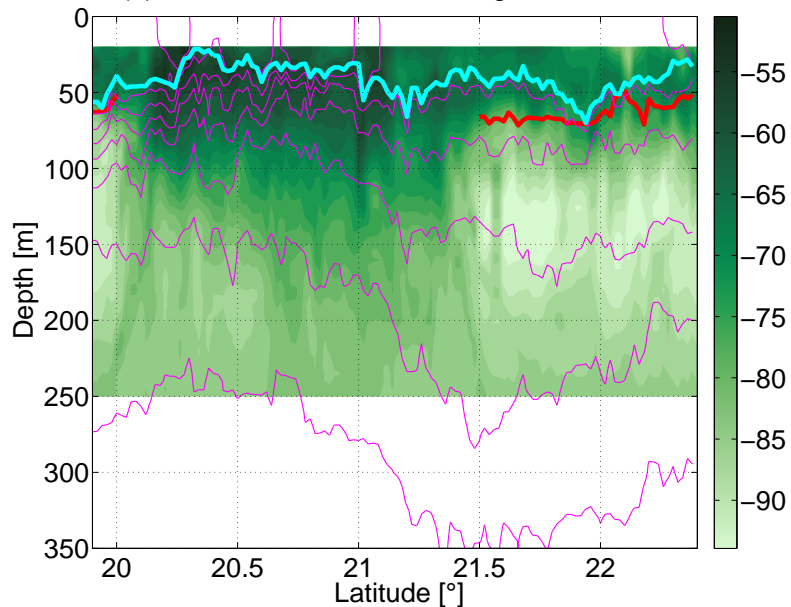


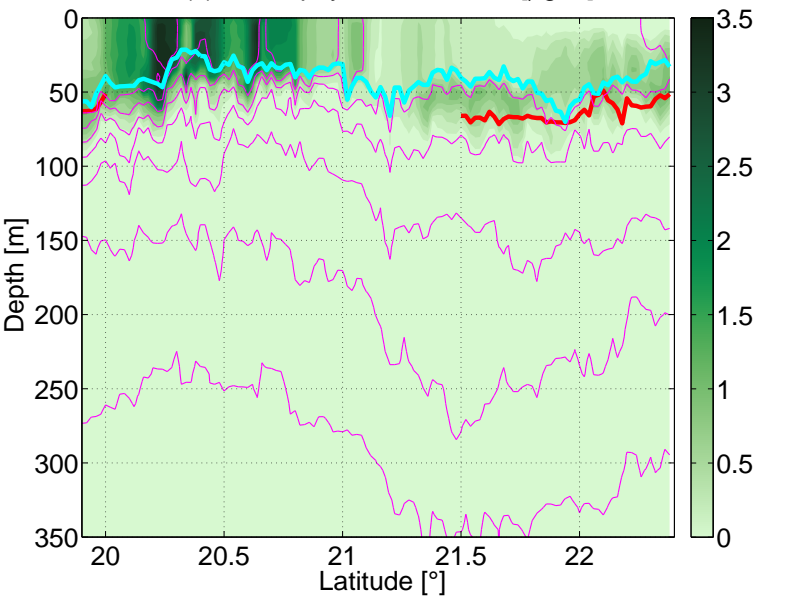
(a) Logarithm of PAR [$\mu\text{mol photons m}^{-2}\text{s}^{-1}$] with ED (1%) in red



(b) Mean volume backscattering from 150 kHz



(c) Chlorophyll fluorescence [$\mu\text{g L}^{-1}$]



(d) Attenuation [m^{-1}] with 0.02/0.03 in black/gray

