

Figure S1. Full version of Fig. 12(a) in the manuscript. For drifter #5, magnitudes of observed velocity vectors (coloured) are compared with simulations based on BSHcmod+W. In addition, magnitudes of windage (in BSHcmod+W) and Stokes drift (in BSHcmod+S) are shown. All model values are specified from either atmospheric or marine fields interpolated to observed (not simulated!) drifter locations.

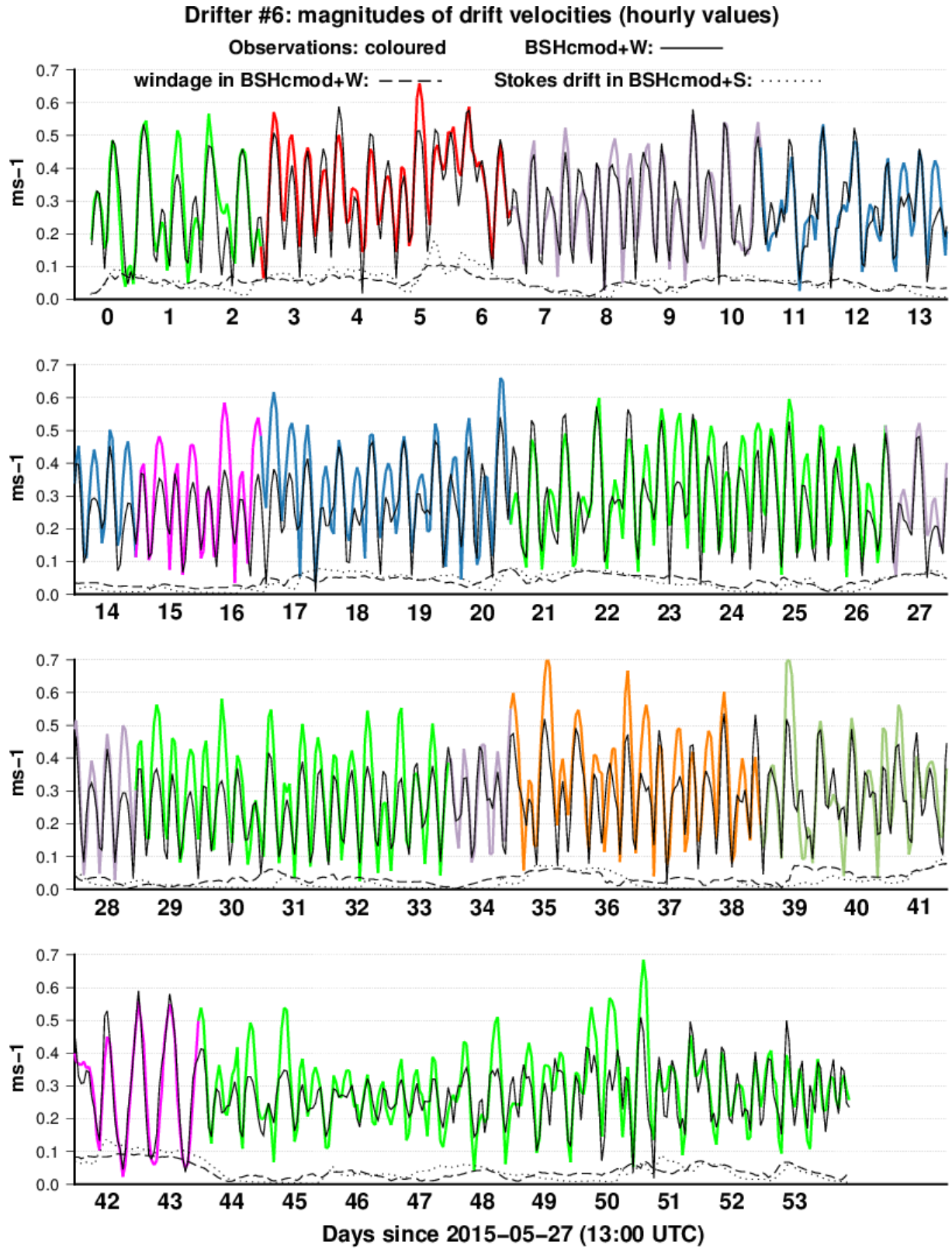


Figure S2. Full version of Fig. 12(b) in the manuscript. For drifter #6, magnitudes of observed velocity vectors (coloured) are compared with simulations based on BSHcmod+W. In addition, magnitudes of windage (in BSHcmod+W) and Stokes drift (in BSHcmod+S) are shown. All model values are specified from either atmospheric or marine fields interpolated to observed (not simulated!) drifter locations.