

Supplement of Ocean Sci., 12, 861–873, 2016  
<http://www.ocean-sci.net/12/861/2016/>  
doi:10.5194/os-12-861-2016-supplement  
© Author(s) 2016. CC Attribution 3.0 License.



*Supplement of*

## **Observed El Niño conditions in the eastern tropical Pacific in October 2015**

**Lothar Stramma et al.**

*Correspondence to:* Lothar Stramma (lstramma@geomar.de)

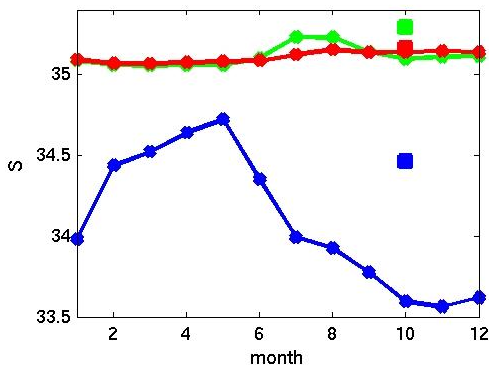
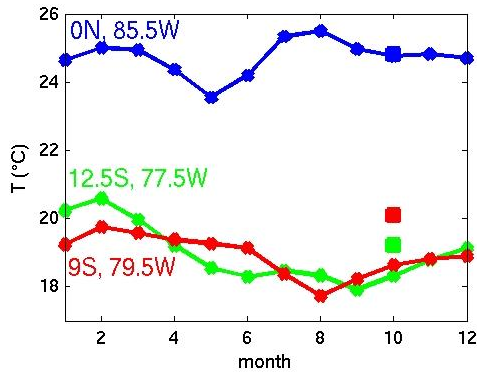
The copyright of individual parts of the supplement might differ from the CC-BY 3.0 licence.

1 **Supplementary figures**

2

3

4

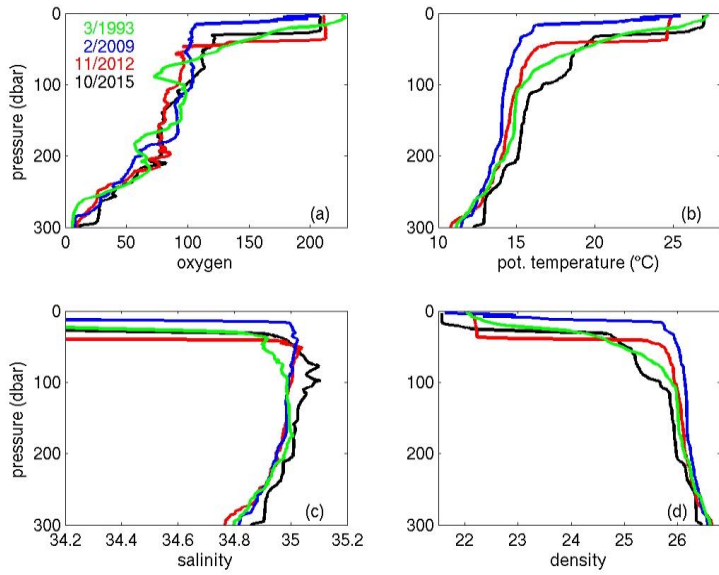


5

6

7 Fig. S1. Sea surface temperature in °C (top) and sea surface salinity (bottom) from the  
8 MIMOC climatology (Schmidtko et al., 2013) for 0°N, 85°30'W (blue line), 9°S, 79°30'W  
9 (red line) and 12°30'S, 77°30'W (green line) and surface values from CTD profiles in  
10 October 2015 at 0°N 85°30'W (blue square), 9°10'S, 79°28'W (red square) and  
11 77°25'W (green square).

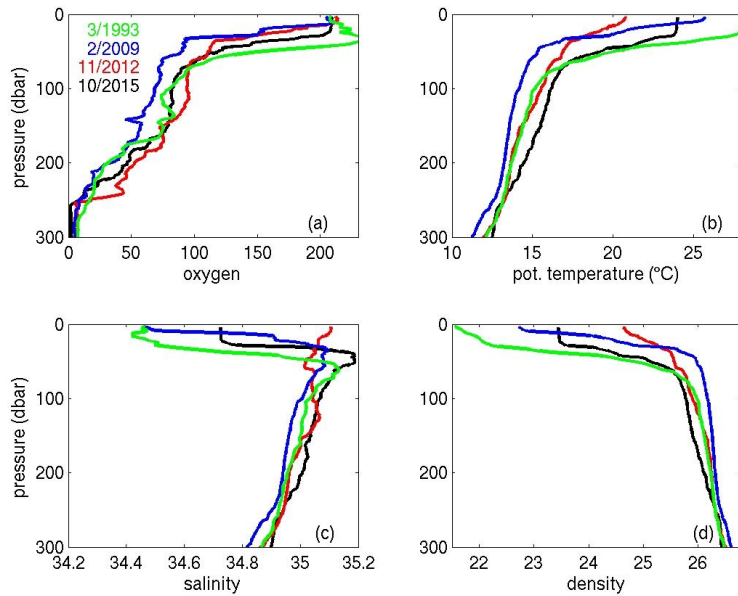
12



1

2 Fig. S2. Upper 300 m profiles at 1°N, 85°50'W for 31 March 1993 (green), 13 February 2009  
 3 (blue), 2 November 2012 (red) and at 85°30'W for 7 October 2015 (black) for (a) oxygen in  
 4  $\mu\text{mol kg}^{-1}$ , (b) potential temperature in  $^{\circ}\text{C}$ , (c) salinity and (d) potential density in  $\text{kg m}^{-3}$ .

5

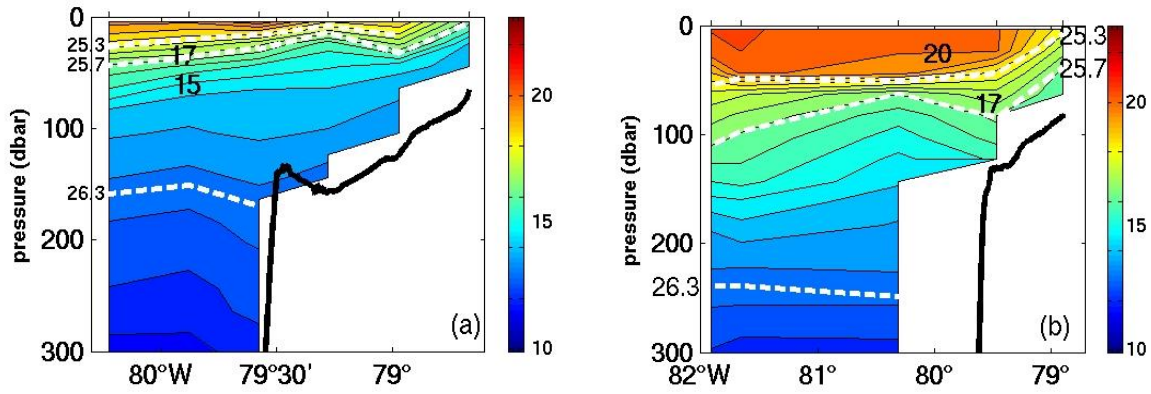


6

7 Fig. S3. Upper 300 m profiles at 2°30'S, 85°50'W for 29 March 1993 (green), 11 February  
 8 2009 (blue), 3 November 2012 (red) and at 85°30'W for 8 October 2015 (black) for (a)  
 9 oxygen in  $\mu\text{mol kg}^{-1}$ , (b) potential temperature in  $^{\circ}\text{C}$ , (c) salinity and (d) potential density in  
 10  $\text{kg m}^{-3}$ .

1

2

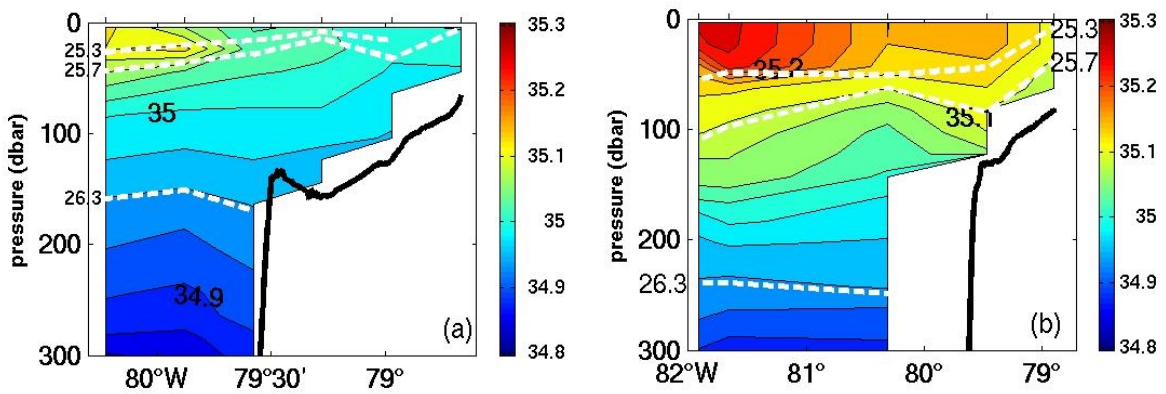


3

4 Fig. S4. Temperature section (color; in °C; same color-scale on both frames) at ~9°S off the  
5 Peruvian shelf for December 2012 (a) and October 2015 (b). Three selected isopycnals are  
6 included as white dashed lines.

7

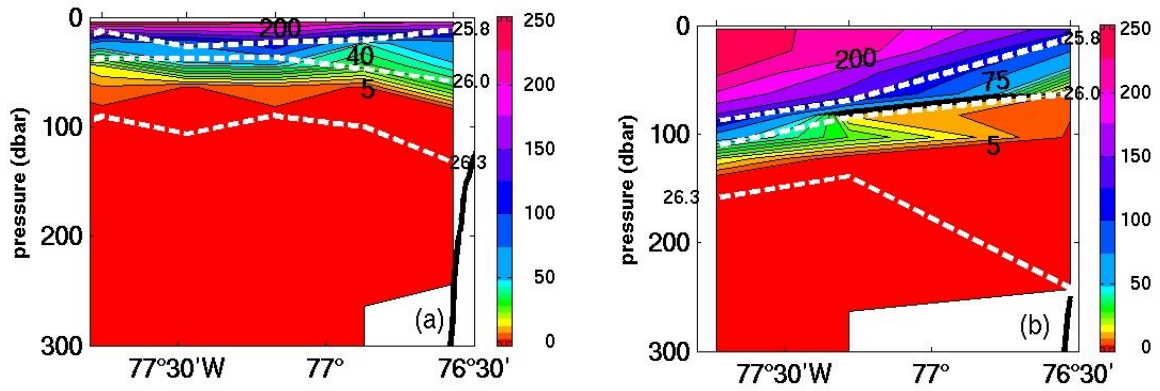
8



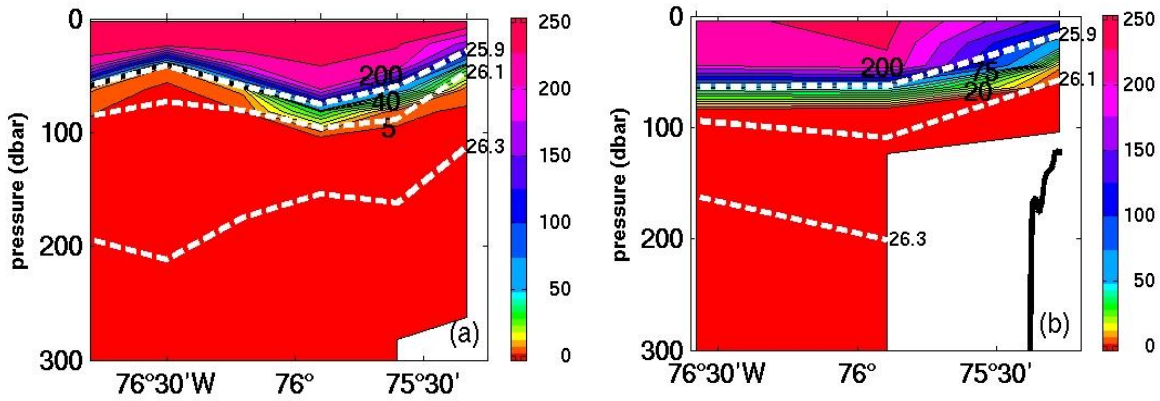
9

10 Fig. S5. Salinity section (color; same color-scale on both frames) at ~9°S off the Peruvian  
11 shelf for December 2012 (a) and October 2015 (b). Three selected isopycnals are  
12 included as white dashed lines.

13



1  
 2 Fig. S6. Oxygen section (color; in  $\mu\text{mol kg}^{-1}$ ; same color-scale on both frames) at  $\sim 14^\circ\text{S}$  off  
 3 the Peruvian shelf for December 2012 (a) and October 2015 (b). Three selected isopycnals are  
 4 included as white dashed lines.



6  
 7 Fig. S7. Oxygen section (color; in  $\mu\text{mol kg}^{-1}$ ; same color-scale on both frames) at  $\sim 16^\circ\text{S}$  off  
 8 the Peruvian shelf for December 2012 (a) and October 2015 (b). Three selected isopycnals are  
 9 included as white dashed lines.

10

11